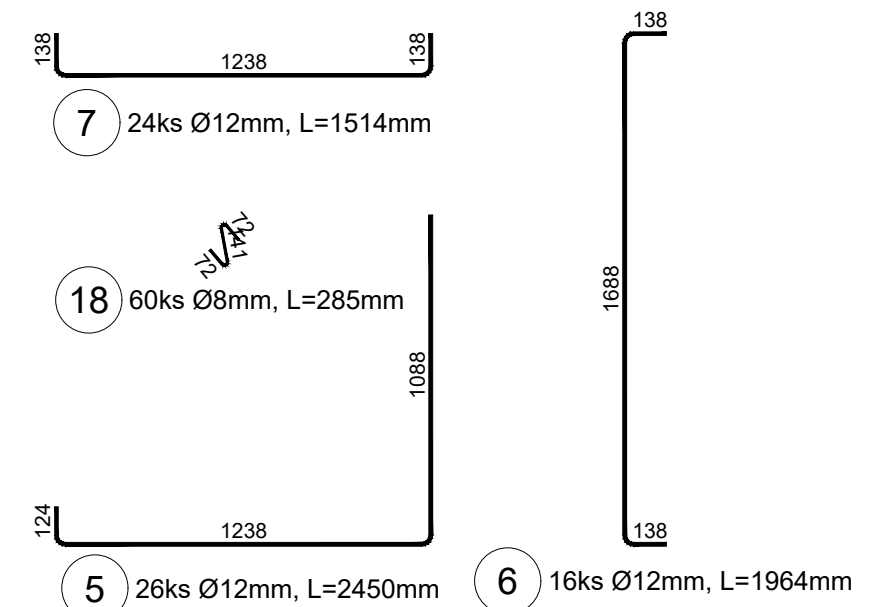
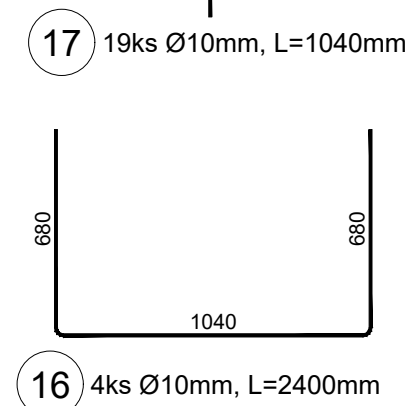


1



14 5ks Ø12mm, L=400mm

Technical drawing of a staircase showing two flights. Flight 10 is a quarter turn with 24 steps, Ø10mm, L=697mm. Flight 2 is a half turn with 18 steps, Ø12mm, L=2335mm. Dimensions include riser heights (114, 120, 14) and tread depths (451, 451).

Diagram illustrating the bending of a thick plate. The plate has a thickness D and a bend radius R . The thickness is divided into two regions: $D \leq 16 \text{ mm}$ and $D > 16 \text{ mm}$. The thickness is also divided into two regions: $dr = 4 D$ and $dr = 7 D$.

Číslo projektu:	46/2019
Datum:	08/2020
Stupeň:	DSP
Měřítko:	1 : 25
Část: E.1.1.2	Číslo výkresu: 4